

VMS case history

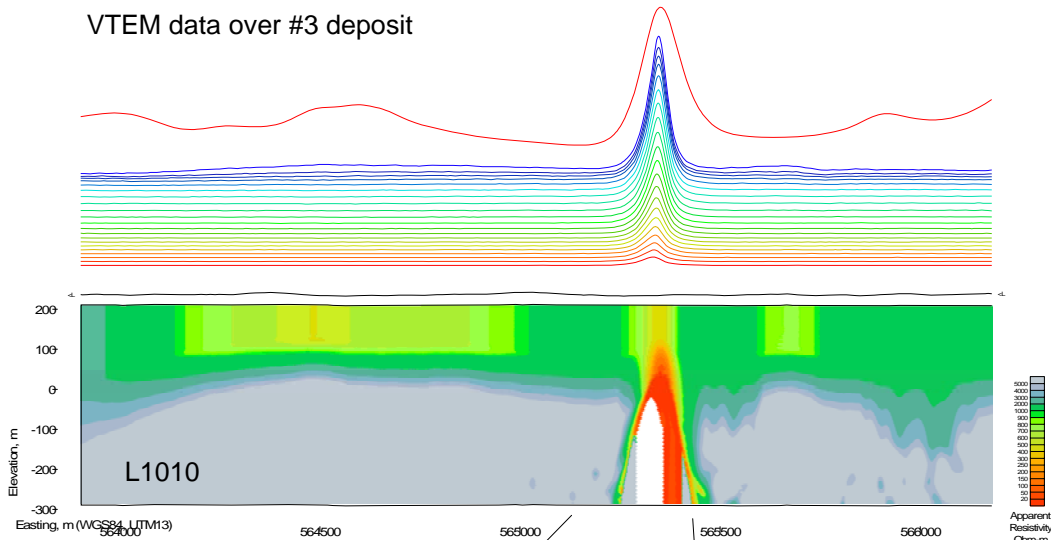
McFauld's Lake #3 deposit



The McFauld's Lake new VMS occurrences were discovered by KWG – Spider Resources when exploring for kimberlites.

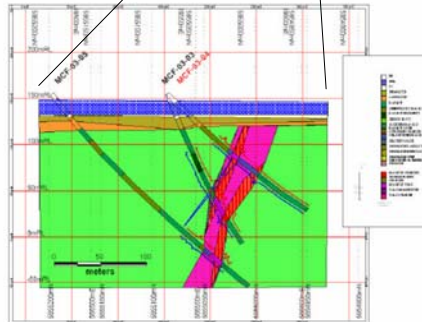
The deposits represent a new VMS camp in the Sachigo Greenstone Belt

VTEM data over #3 deposit



McFauld's #3 has reserves of 2.7 mt of 2.22% Copper equivalent.

Note that it is a blind target as it is covered by 20 metres of younger sedimentary rocks



In late 2003, MacDonald Mines, in cooperation with KWG-Spider, flew a number of test lines over the McFauld's #1 and #3 deposits. Line 1010, just on the edge of the deposit is shown above. The VTEM response is detected to the last channels showing good conductance. Subsequently, after the exchange of datasets, MacDonald Mines chose Geotech to fly a 4,000 line km VTEM survey over their interests in the area in 2004. In a recent Press Release (January, 24, 2005), they stated:

"GEOTECH LTD. AIRBORNE DATA PLAYS A KEY ROLE

MacDonald considers that the reconnaissance drill programs to date have been highly successful in identifying several mineralized horizons over a strike length of greater than 10 km on both the MacNugget and Big Mac project areas. Excellent correspondence between helicopter-borne VTEM surveys and the presence of conductive sulfide mineralization has been noted. These facts confirm that MacDonald's initial decision to use Geotech Ltd's helicopter-borne geophysical system was justified in this area with almost no outcrop exposure and nearly continuous peat swamp. "

