



# FW-MAG

---

## HIGH RESOLUTION FIXED WING MAGNETICS

Geotech operates a fleet of company owned Caravans, PAC750XLs and Cessnas capable of flying single sensor tail boom magnetics and optional wing tip pods that collect gradient magnetic data.

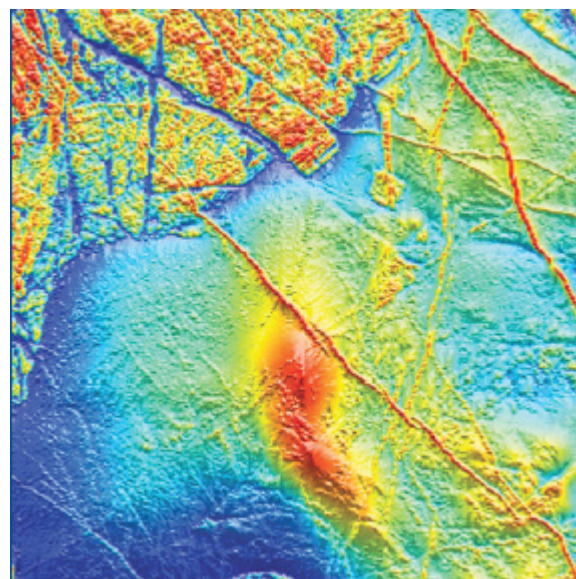


# FIXED WING MAGNETICS

Geotech has been flying fixed wing magnetics for 30+ years globally. Annually Geotech flies and processes close to 1,000,000 line-kms of fixed wingmagnetic data. Geotech owns various platforms to fly fixed wing magnetics; Caravans, PAC750XL and Cessnas; as well Geotech is able to use aircrafts locally by installing our equipment making it easy for us to fly in any country in any conditions around the world. With more than 100 magnetometers and 40 radiometrics packs we are well equipped to offer premium services to our clients.

**1,000,000 line-kms of fixed wing magnetic data flown annually.**

We have the highest quality data and analysis. We offer premium service, leading technology and the deepest penetration with the lowest noise. Our corporate structure, international presence, global experience and dedicated air fleet is unmatched.



## BENEFITS

- Bases of operations in Africa, Australia, North & South America allow for minimal mobilization times and local knowledge
- Long range auxiliary tanks that allow up to 10 hours of continuous flight
- Millions of line-kims flown - familiarity with most countries, able to mobilize anywhere in the world
- Customized programs designed to suit client requirements
- History of flying many large programs with multiple aircrafts on each project
- Over 10 fixed wing aircrafts are available from our fleet
- Large inventory of equipment allows Geotech to install magnetics in many different aircrafts

## SPECIFICATIONS

Compensator	RMS Adaptive Aeromagnetic Real-Time Compensator - three magnetometers input with gradiometer capability.
Magnetometer	Up to three Geometrics high-sensitivity cesium magnetometers (tail stinger and each wing-tip) for mapping geologic structure and lithology, sampling at 10 Hz.
Base station	A geometrics high-sensitivity cesium magnetometer base station for diurnal correction, or equivalent, sampling at 1Hz.
Radar Altimeter	A Bendix King Radar altimeter with an accuracy of approximately 1 meter.
GPS Navigation	A real time GPS navigation system providing an in-flight accuracy up to 3 meters.

## RADIOMETRICS (OPTIONAL)

Geotech owns and operates over 40 Radiation Solutions Incorporated state of the art spectrometers each with 1024 channels. We are able to add up to 3 crystal packs (total of 60 liters; 48 down and 12 up). The Radiation Solutions Incorporated (RSX-5 model) Spectrometer is the most updated high technology Radiometric System launched on the geophysical instrumentation market.

**Americas**  
www.geotech.ca  
sales@geotech.ca

**International**  
www.geotechairborne.com  
sales@geotechairborne.com

**Offices**  
Australia Brazil Barbados  
Canada Chile Ghana  
Kazakhstan Russia South Africa

